

RD8200 *Locate with Exactitude*

RADIODETECTION®



- 1 Optional Built-In GPS
- 2 Bluetooth Connections
- 2 Fault Find Modes
- 5 Antenna's with DSP
- 5 Passive Frequencies
- 5 Custom Frequencies <1kHz
- 5 or 10 Watt Transmitter
- 14 Current Direction Frequencies
- 22 Active Freqs (163Hz-200kHz)
- 50+ Feet Depth Range
- 90 Volts High-Output
- Auto Depth & Current
- Directional Compass
- Remote iLoc Control to TX10B
- Clear Locates Under Power Lines
- User Activity Data Logging
- Swing Measurements /warnings
- Sidestep Auto
- 3 Year Warranty

Discover this
Product



QR

www.subsurfaceolutions.com

Subsurface Solutions

Damage Prevention Experts

402-577-0227


Nulca Certified Training

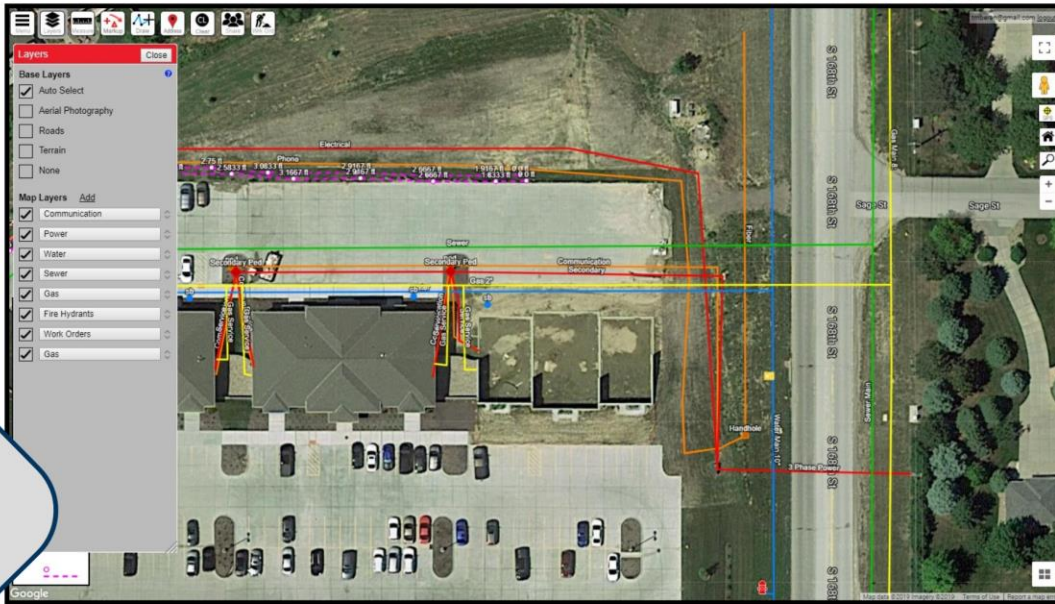


For over 50 years Radiodetection has been specializing in precision for damage prevention

Add GPS Mapping Capabilities

SubsurfaceMaps.com Online GIS Portal & App

 Subsurface
Maps



8200 Options **RADIODETECTION**

RD8200 locators:	RD8200	RD8200 G
Locate Frequencies	22	22
Sonde Frequencies	4	4
Passive Modes	5	5
On-board GPS		✓
Power Filters	✓	✓
Usage-Logging		✓
Survey Measurements	✓	✓
CALSafe™	■	■
4 kHz	4k+CD	4k+CD
Current Direction	✓	✓
Fault Find	✓	✓
Depth in Power	✓	✓
Passive Avoidance	✓	✓
iLOC	✓	✓
Dual Bluetooth connectivity	✓	✓
Lithium-Ion Battery	•	•
3 year warranty on registration*	✓	✓

Transmitters	Tx-5	Tx-10	Tx-10 B
Max. Output Power	✓	✓	✓
Active Frequencies		✓	✓
Induction frequencies		✓	
Current Direction Frequencies		✓	✓
iLOC remote control		✓	✓
Fault Find		✓	✓
Induction field strength		✓	✓
Eco Mode			✓
Lithium-Ion Battery		✓	✓
3 year warranty on registration*		✓	✓

*Locators and transmitters only. Does not include battery packs and accessories.

Other features described are standard on the RD8200 Locators and Tx transmitters unless otherwise noted.

✓ Available, enabled by default ● Option ■ Available, disabled by default.



Subsurface Solutions
Damage Prevention Experts

402-577-0227
www.subsurfacesolutions.com

For over 50 years Radiodetection has been specializing in precision for damage prevention